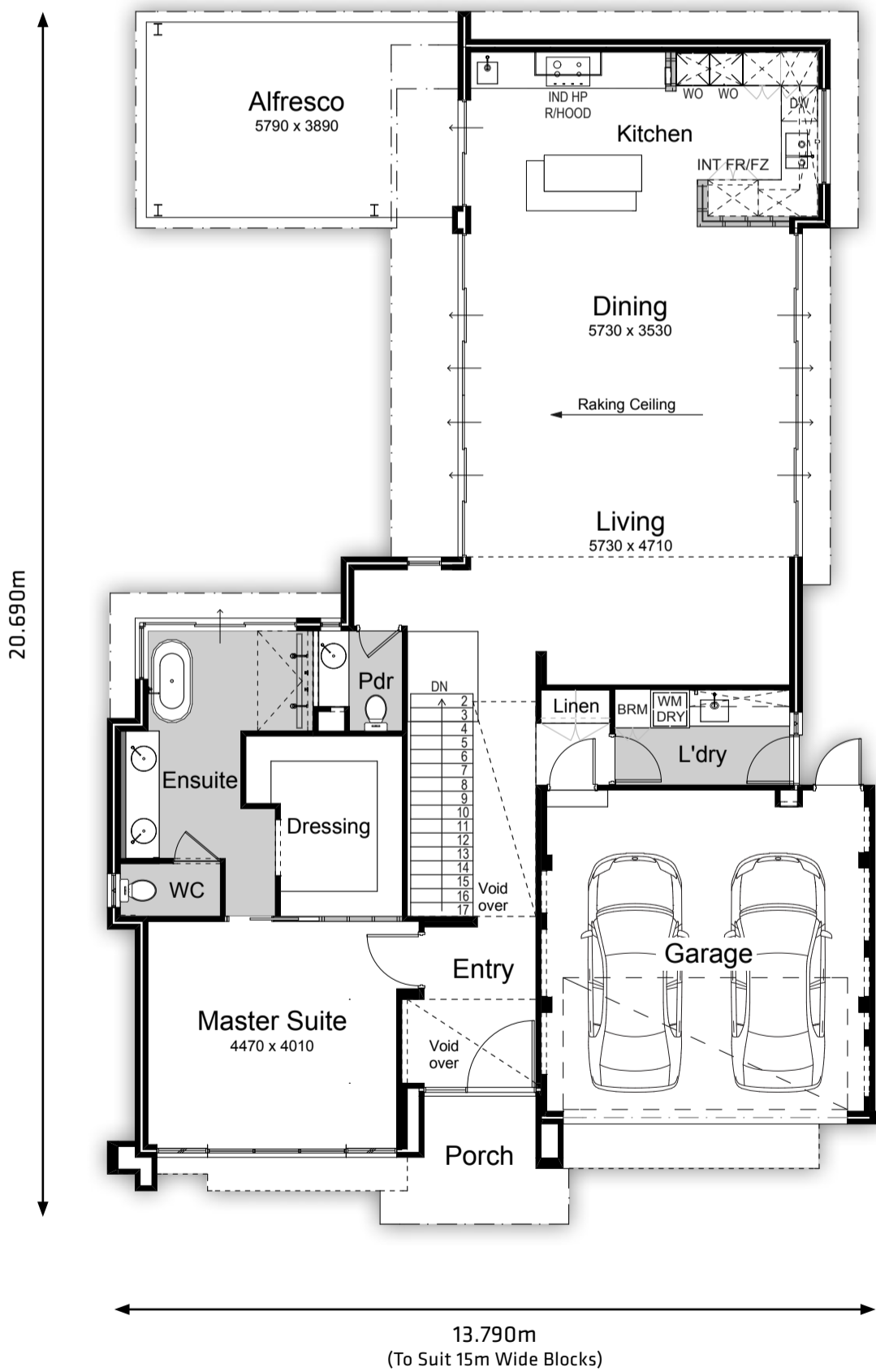




# THE PORTOFINO

-  4 BED
-  3 BATH
-  2 GARAGE
-  15m BLOCK



House - Ground	153.753m <sup>2</sup>
House - Upper	127.747m <sup>2</sup>
Garage	36.181m <sup>2</sup>
Alfresco	22.523m <sup>2</sup>
Porch	6.553m <sup>2</sup>
<b>Total</b>	<b>346.757m<sup>2</sup></b>

