



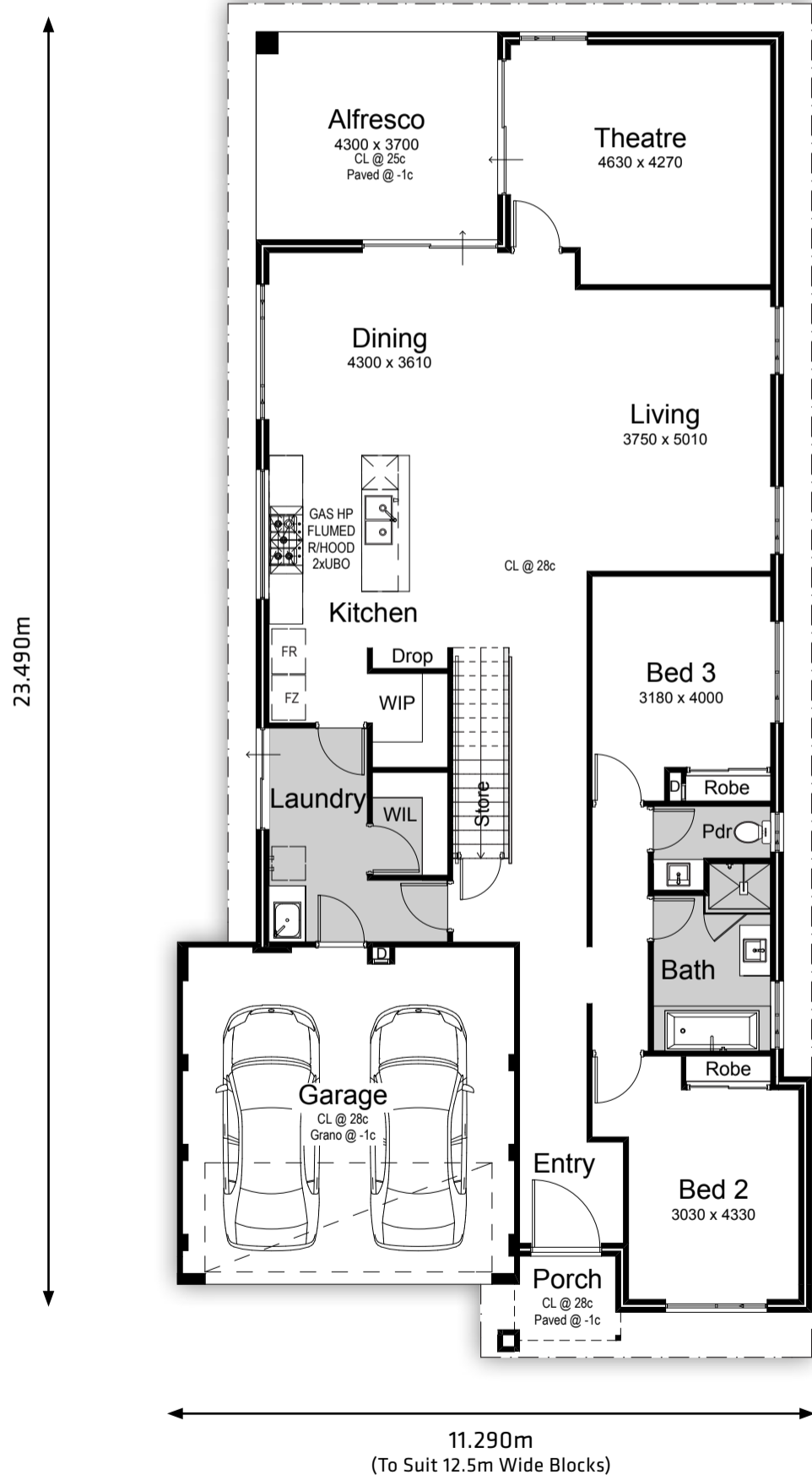




THE AMALFI

-  4 BED
-  3 BATH
-  2 GARAGE
-  12.5m BLOCK



| | |
|----------------|-----------------------------|
| House - Ground | 168.814m ² |
| House - Upper | 71.207m ² |
| Garage | 36.318m ² |
| Alfresco | 15.910m ² |
| Porch | 3.352m ² |
| Total | 295.601m² |

