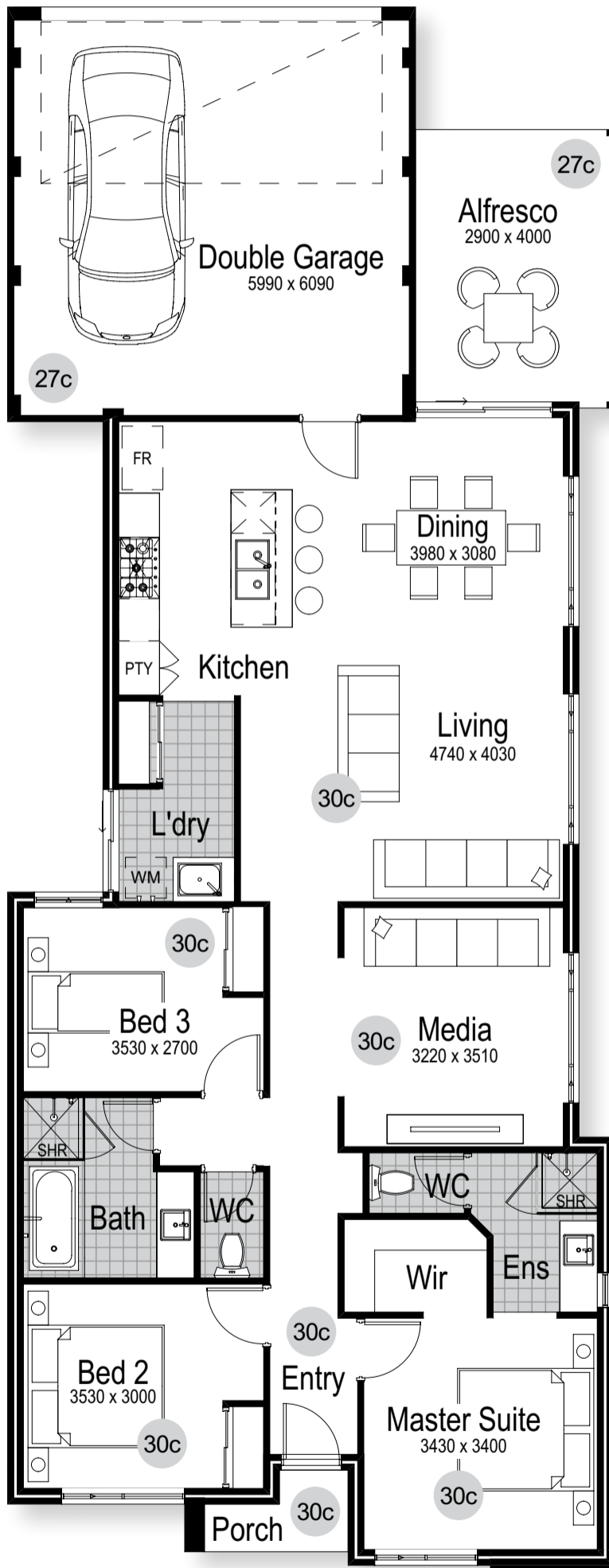


# THE HERVEY

## 101 LIFE



House	130.527m <sup>2</sup>
Garage	36.066m <sup>2</sup>
Alfresco	11.645m <sup>2</sup>
Porch	2.182m <sup>2</sup>
<b>Total</b>	<b>180.420m<sup>2</sup></b>



innovative homes by  
**Scott Park**  
Managing Director

Call 9208 9101

[101residential.com.au](http://101residential.com.au)

Photos are for illustrative purposes only BC 13521

